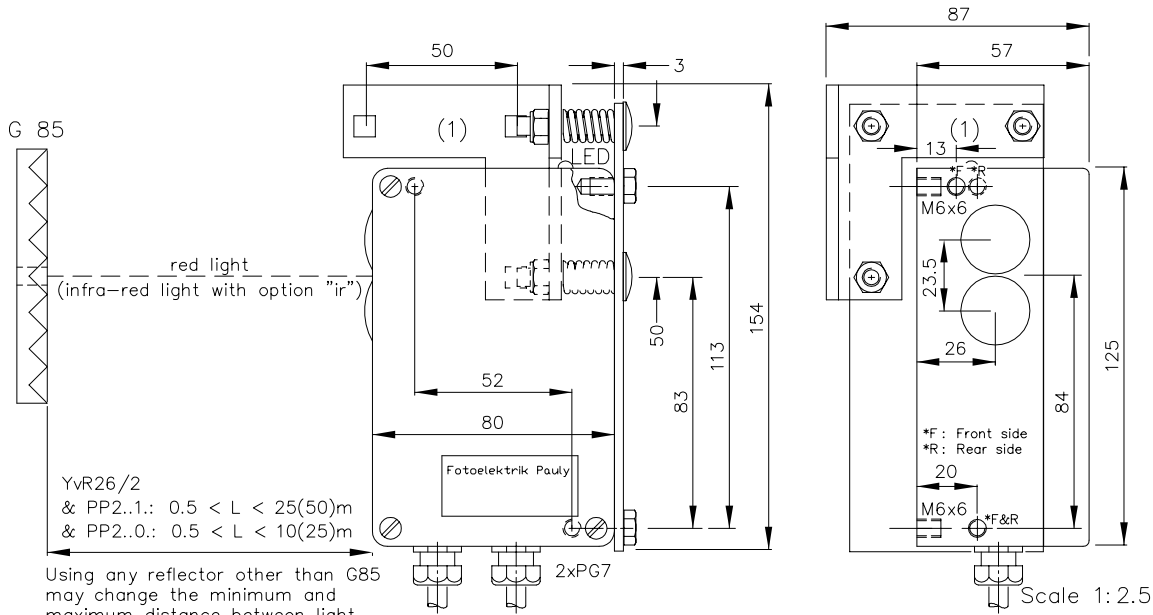


(Infra-)red light Reflex Optic Head Type YvR26/2

for external control unit



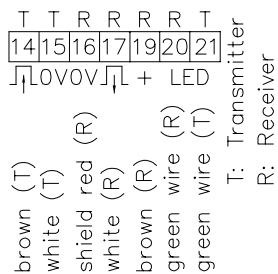
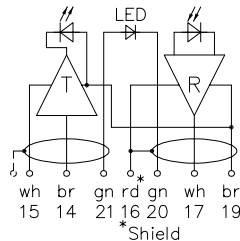
Technical Characteristics of the minimum version:

Housing	Al-cast
Weight	approx. 600g
Protection mode	IP65
Connection	terminal block up to 2x40m 3-wire shielded cable, heat resistant if necessary by control unit
Supply	LED 650nm, visible, rl
Transmitter light	approx. 360mm/20m
Light beam diameter	>80kLx
Steady light resist.	LED red
Switch indicator	DIANA, ii (optional)
Level indicator	-25...+100°C
Ambient temperature	10(25)m with control units: PP2..02 or ..00-2
Range	25(50)m with control units: PP2..12 or ..10-2 in clear air

Accessories:

Control unit, required for operation
shielded teflon control cable, heat resistant
Reflectors, espec. order-no.: 64xy
Adjustment flange JF26H (1)
Heavy adjustment flange R26SH
Elbow tube adjustment AD26SS1 or AD26SS2
Cooling water flange KW26 (not for dry groups)
Dust protection tube TUB75 with adapter
Diaphragms, Special filters

Connections:



Attention:

The shield of transmitter-cable has to be connected in the control unit but may not be connected in the optic head!
Please read the appended connection instructions for Reflex optic heads

Options:

Level indicator DIANA, ii; then control unit with DIANA-Distribution i-i required
Transmitter light Infra-red light, LED 880nm, invisible, ir
in case of dust protection tube: adapter required
If using cooling water flange, then milled wall, y



0.5 - 10(25)m
0.5 - 25(50)m

(Infra-)red light
Reflex Optic Head

YvR26/2

Order no.:

3331

3331 DE (06.11.98 tb)
E_3331_1 (17.07.02 tb)
(30.07.90 rb) (10.08.04 tb)
(07.02.97 tb) 09.12.04 mJ